

Parking at schools

Important information for Parents/Carers of Students and other road users

www.logan.qld.gov.au

Parking at school safely

The daily school drop off and pick up can be stressful, but it should always be safe.

Normal road and parking rules apply around all schools, especially around their entrances, bus stops, and pick up and set down areas.

School zones are inherently busy areas with large numbers of young children who do not always understand the dangers of roads and vehicles.

You can help by observing parking restrictions around schools at all times. Parking restrictions around schools are planned with your children's safety in mind.

Automatic Number Plate Recognition vehicle

Council uses automated number plate recognition technology for parking enforcement. The technology is in use in many other areas of the nation and is used for enforcing both parking and moving vehicle offences. This new technology is fitted on a vehicle and will enable Council to monitor parking around schools in an efficient manner. If a vehicle is found to be parked contrary to the Queensland Road Rules, an infringement notice will be issued to the vehicle owner by post.

Drop and Go Zones (passenger loading zone)

Most schools have a passenger loading zone outside the school which are designed for drop and go. These zones are in place so a vehicle can stop for a short period of time to drop off or to collect children, moving on immediately to allow other drivers to use the zone. Drivers should stay in the vehicle where possible.

Parents should arrange with their children to meet them in a safe place near the drop and go zone so the child can then enter the vehicle and allow the vehicle to move off as soon as possible.

When used correctly, the drop and go zones are very safe and effective, helping to reduce traffic congestion around schools.

Handy Tips for Safe Parking

1. Manage time accordingly to get your child to the school gate safely and without the need to rush;
2. Park a few streets away and walk your children to school. This is also good for teaching your children road safety skills;
3. Organise a safe place to meet your child in case you are late for collection.

Common Road Rules that apply

No Stopping:

A driver must not stop, park or halt their vehicle in an area where a No Stopping sign applies. These signs are placed in areas where safety is paramount such as near pedestrian crossings, on road corners or to ensure safe visibility for vehicles entering or exiting a property.

On-the-spot fines of \$121.00 apply.



Children/Pedestrian/Foot crossings:

A driver must not stop on a crossing or on a road within 20m before or 10m after the crossing. Keeping a safe distance from a crossing ensures the safety of children using the crossing.

On-the-spot fines of \$243.00 apply.

Loading zones:

A driver must not stop or park for longer than indicated in a loading zone. Loading zones are in place to ensure a high turnover of vehicles can utilise the loading zone to drop off or collect children. The driver should stay in the vehicle where possible.

On-the-spot fines of \$121.00 apply.



Parking at schools

Fact Sheet

Bus Stop/Bus zone:

Unless you are driving a bus, (seating more than 12 adults including the driver) you must not stop a vehicle in a bus stop or bus zone. A driver must not stop within 20m before and 10m after a bus stop, to ensure buses have enough room to enter and exit the bus stop.

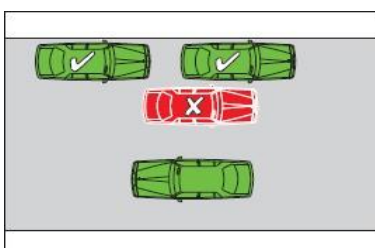
On-the-spot fines of \$243.00 apply.



Double parking:

A driver must not stop a vehicle between the centre of the road and another vehicle that is parked at the side of a road, this includes vehicles parked in marked angle parking bays. This rule helps to prevent children from crossing between vehicles where there is a high risk of a collision occurring.

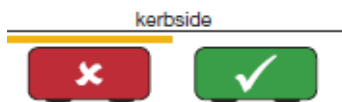
On-the-spot fines of \$163.00 apply.



Yellow edge lines:

A driver must not stop a vehicle at the side of a road marked with a continuous yellow edge line. Usually these lines are placed in areas where safety is paramount such as near pedestrian crossings, on road corners or to ensure safe visibility for vehicles entering or exiting a property.

On-the-spot fines of \$121.00 apply



Parking a vehicle on a footpath/nature strip:

It is an offence to park a vehicle on a footpath, dividing strip or nature strip. Parking on the footpath creates an unacceptable hazard for pedestrians, particularly those who are visually and/or physically impaired. Vehicles driving across footpaths and nature strips create a higher risk of collision with pedestrians, especially smaller children who are harder to see.

On-the-spot fines of \$81.00 apply.

Parking on a painted island:

A driver should not stop on a painted island. Painted islands are usually marked with painted stripes or chevrons and depict no stopping areas.

On-the-spot fines of \$81.00 apply.

Parking on a dividing strip:

Dividing strips separate vehicles travelling on the road carriageway. Vehicles parking on the dividing strip create a higher risk to smaller children who are harder to see when crossing the road.

On-the-spot fines of \$81.00 apply.

Disability parking sign:

Only vehicles correctly displaying a current disability parking permit can legally park in a disability parking bay. Disability parking permits are granted to persons when their ability to walk is severely restricted by a medical condition or disability. When a vehicle is parked in a disability parking bay, the disability permit holder must either enter or exit the vehicle. A disability parking bay may be designated by either a painted road marking displaying an international symbol of access or a parking sign or both.

On-the-spot fines of \$243.00 apply.



Timed parking zones:

A driver must not stop or park for longer than indicated in a timed parking zone. Timed parking zones are in place to ensure a high turnover of vehicles can utilise the parking area.

On-the-spot fines of \$121.00 apply.

Driveways

A driver must not obstruct a driveway or stop a vehicle on or across a driveway unless the driver is dropping off or picking up passengers and the driver does not leave the vehicle and drives on within 2 minutes after stopping.

On-the-spot fines of \$81.00 apply

Failing to park in parking bays:

If there are marked parking bays on a road or in an area the driver must park the vehicle completely within the parking bay (whether or not a park in bays only sign is displayed).

On-the-spot fines of \$81.00 apply

Remember - safe parking may save a life

For more information

Phone 3412 3412

Visit www.logan.qld.gov.au

Email: council@logan.qld.gov.au

Version 3, 31 August 2016